

# EOVE-150

## Life support ventilation



MOVE AND CARE CONCEPT BY

**EOVE**

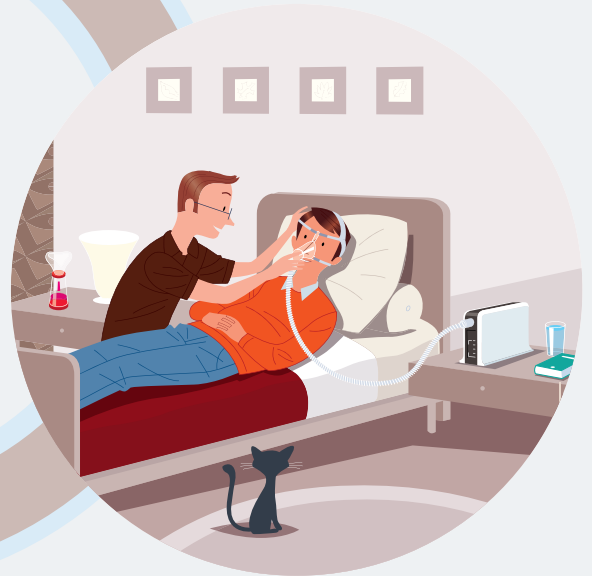
# Air Liquide Healthcare

## Protecting vulnerable lives

Every patient with a chronic condition requires **continuous personalised support**.  
Air Liquide Healthcare develops **solutions** to:



**Facilitate decision-making** in hospitals and pneumology wards for diagnosis and setting up new treatments.



**Provide treatments** that are comfortable, effective and suitable for patients' homes.



**Facilitate interaction between healthcare providers and medical teams** to identify at-risk patients, anticipate events before they happen and focus attention on those with the greatest need.

# EOVE-150

## A complete solution



### A suitable treatment for all solutions:

- ▶ For **pediatric** patients from 3,5 kg, with a tidal volume of 30mL
- ▶ Ventilate according to the need: volume or pressure
- ▶ Complete choice of circuit configuration: with valves, with leak, simple limb, double limb or mouthpiece
- ▶ **High-flow** mode to save up space at patient's home
- ▶ **Mouthpiece** modes for a better quality of life



### Freedom and mobility:

- ▶ Click&Go concept based on swappable ventilation module of 1,8 kg
- ▶ **Mobility** solutions with a bag for the module and external batteries
- ▶ Autonomy up to **18h** with external batteries



### Modularity and intuitivity:

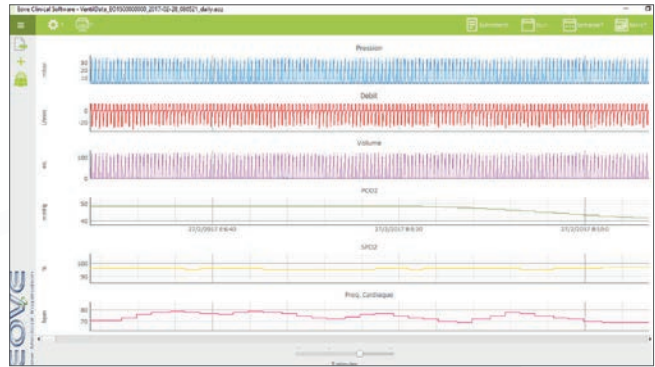
- ▶ Settings and monitoring view on the same screen
- ▶ Scalable interfaces
- ▶ **Easy** to configure
- ▶ Up to **4 renameable** and customizable presets





## Connectivity via 4G or USB key:

- ▶ Ventilation data: Download and analysis of **detailed data** with statistics, waveforms and trend graphics
- ▶ Maintenance data recovery in **real time**



## Monitoring solutions



Transcutaneous CO<sub>2</sub> monitoring with Sentec



SpO<sub>2</sub> monitoring via Xpod or BT



FiO<sub>2</sub> monitoring kit (cable only)

From 3,5 kg,  
from 30 mL

Easy  
to use

Modular  
interfaces

Remote  
monitoring  
via 4G

Designed  
and manufactured  
in France

Liberty  
and mobility

C-Flow  
mode

 **PASS**  
FRENCH TECH

# Settings

Valve modes (A)VCV - (A)PCV - PSV - PSV-VT - V-SIMV - P-SIMV		
Settings	Adult	Pediatric
VT (ml)	300 - 2500	30 - 600
PEEP (mbar)	OFF / 1 - 25	OFF / 1 - 20
Flow ramp	Square / Decelerating	Square / Decelerating
Rate (c/min)	5 - 60	8 - 80
I. Time (sec)	0,3 - 2,5	0,3 - 2,5
I. Trig	OFF / AUTO / 1 - 5	OFF / AUTO / 1 - 5
E. Trig (%)	AUTO / 10 - 90	AUTO / 10 - 90
Pres. Control (mbar)	5 - 59	5 - 59
Pres. Support (mbar)	5 - 59	5 - 59
Pres. Ramp	1 - 5 (100 - 500 ms)	1 - 5 (50 - 250 ms)
I. Time Min (sec)	AUTO / 0,3 - 2,5	AUTO / 0,3 - 2,5
I. Time Max (sec)	AUTO / 0,3 - 2,5	AUTO / 0,3 - 2,5

Mouthpiece modes MPV - MPP		
Settings	Adult	Pediatric
VT (ml)	300 - 2500	100 - 600
Flow ramp	Square/Decelerating	Square/Decelerating
Rate (cpm)	OFF / 5 - 60	OFF / 5 - 80
I. Time (sec)	0,3 - 2,5	0,3 - 2,5
I. Trig	OFF / AUTO / 1 - 5	OFF / AUTO / 1 - 5
Blas Flow (L/min)	1 - 20	1 - 20
Pres. Control (mbar)	5 - 59	5 - 59
<b>Clinical</b>		
Indications	Life support / >3,5 kg	
Circuits types	Simple / Double limb	
Presets	1 to 4 customizable presets	
<b>Physical</b>		
Physical	Docking	Module
Weight	1,3 kg	1,8 kg
Dimension	25 x 21 x 13 cm	24,5 x 14,5 x 10 cm
<b>Supply</b>		
Power supply	220-240 VAC	
Internal battery	Lithium Ion 2.8 Ah	4 hours
External DC Input	13 - 30 V	115 W

Leak Modes CPAP - PAC - ST - VTS - C-FLOW		
Settings	Adult	Pediatric
VT (ml)	300 - 2500	30 - 600
CPAP (mbar)	4 - 20	4 - 20
IPAP (mbar)	6 - 50	6 - 50
EPEP (mbar)	4 - 25	4 - 25
Rate (cpm)	5 - 60	5 - 80
I. Time (sec)	0,3 - 2,5	0,3 - 2,5
I. Trig	OFF / AUTO / 1 - 5	OFF / AUTO / 1 - 5
E. Trig (%)	AUTO / 10 - 90	AUTO / 10 - 90
Pres. Ramp	1 - 5 (100 - 500 ms)	1 - 5 (100 - 500 ms)
I. Time Min (sec)	AUTO / 0,3 - 2,5	AUTO / 0,3 - 2,5
I. Time Max (sec)	AUTO / 0,3 - 2,5	AUTO / 0,3 - 2,5
C-Flow (L/min)	2 - 60	2 - 60

## Item numbers

	Item numbers
EO-150 Ventilator	EO-150VNT EUR
Transport bag	EO-CARBAG1X0
Travel bag	EO-TRVELBAG1X0
Nomad bag	EO-NOMADBAG-EVO
Battery pack	EO-BATPCK
Battery Pack Coupling Cable	EO-CPLPACK
Battery bag	EO-BATBAG
Trolley	EO-TROLLEY



Helioparc  
4, Boulevard Lucien Favre  
64000 Pau  
France

[www.eove.fr](http://www.eove.fr)